

# Accidental Injury Insurance

New!

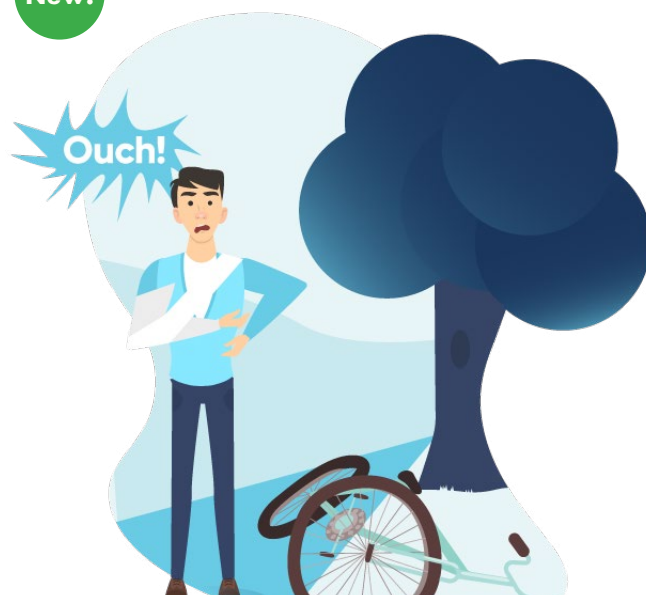
## New Plan Offering By Cigna

Accidental Injury Insurance helps protect you when the unexpected occurs, with cash benefits paid directly to you for a covered accidental injury.

### Fixing the bike is one thing— what about fixing you?

*Billy, a 35 year-old cycling enthusiast, hit a wet patch and had a bad fall. Taken by ambulance to the hospital, he was given some tests, diagnosed with a broken clavicle, treated, and had to have therapy to get him back to 100% cycling shape. (The bike was saved, too!)*

*Billy's medical coverage didn't cover all his costs. Fortunately, he had **Accidental Injury Insurance** to help pay for uncovered medical AND everyday expenses.*



### Benefits Payable For...

|                              |
|------------------------------|
| Emergency Care Treatment     |
| Physician Office Visit       |
| Hospital Admission           |
| Fractures & Dislocations     |
| Follow-up Care               |
| Ambulance (Ground/Water/Air) |



Click the video thumbnail to watch the video for more information about Cigna's Accidental Injury coverage.

### \$50 Wellness Benefit!

Accidental Injury coverage comes with a \$50 benefit per covered person when you participate in your Wellness Treatment, Health Screening Test, and/or Preventive Care Benefit! Don't miss this added incentive!



| Accidental Injury Plan Offerings                                                                                                                      |                                 |
|-------------------------------------------------------------------------------------------------------------------------------------------------------|---------------------------------|
| Plan Offerings                                                                                                                                        | Plan Amounts                    |
| <b>Initial &amp; Emergency Care</b>                                                                                                                   |                                 |
| Emergency Care Treatment                                                                                                                              | \$200                           |
| Physician Office Visit (includes urgent care)                                                                                                         | \$200                           |
| Diagnostic Exam                                                                                                                                       | \$100                           |
| Ground or Water Ambulance                                                                                                                             | \$600                           |
| Air Ambulance                                                                                                                                         | \$1,500                         |
| <b>Hospitalization Benefits</b>                                                                                                                       |                                 |
| Hospital Admission                                                                                                                                    | \$1,000                         |
| Intensive Care Unit Admission                                                                                                                         | \$1,000                         |
| Hospital Stay                                                                                                                                         | \$200                           |
| Intensive Care Unit Stay                                                                                                                              | \$400                           |
| <b>Fractures and Dislocations</b>                                                                                                                     |                                 |
| Per covered surgically-repaired fracture                                                                                                              | \$800-\$8,250                   |
| Per covered non-surgically-repaired fracture                                                                                                          | \$400-\$4,125                   |
| Chip Fracture (percent of fracture benefit)                                                                                                           | 25%                             |
| Per covered surgically-repaired dislocation                                                                                                           | \$300-\$6,000                   |
| Per covered non-surgically-repaired dislocation                                                                                                       | \$150-\$3,000                   |
| <b>Follow-Up Care</b>                                                                                                                                 |                                 |
| Follow-up Physician/Medical Professional Office Visit                                                                                                 | \$75                            |
| Follow-up Physical Therapy Visit                                                                                                                      | \$75                            |
| <b>Enhanced Accident Benefits Examples</b>                                                                                                            |                                 |
| Small Lacerations (Less than or equal to 6 inches long and requires 2 or more sutures)                                                                | \$50                            |
| Large Lacerations (More than 6 inches long and requires 2 or more sutures)                                                                            | \$500                           |
| Concussion                                                                                                                                            | \$300                           |
| Coma (lasting 7 days with no response)                                                                                                                | \$10,000                        |
| <b>Wellness Treatment, Health Screening Test &amp; Preventive Care Benefit</b>                                                                        |                                 |
| Benefit paid for all covered persons is 100% of the benefit shown. Also includes COVID-19 Immunization, Tests, and Screenings. Virtual Care accepted. | \$50                            |
| <b>Sports Accident Benefit</b>                                                                                                                        |                                 |
| Organized and Personal Sports Activity<br>Limited to 10 per year                                                                                      | 50% of the<br>qualified benefit |

| Accidental injury<br>Semi-Monthly Costs |        |
|-----------------------------------------|--------|
| Tier                                    | Plan   |
| Employee                                | \$2.95 |
| Employee & Spouse                       | \$5.31 |
| Employee & Child(ren)                   | \$7.27 |
| Employee & Family                       | \$9.63 |

For a full summary of benefits, click [HERE](#).

