

Hospital Care Coverage

New Provider - Cigna

Hospital Care Coverage helps with the out-of-pocket costs associated with a covered hospital stay.

That hospital stay may cost more than just your appetite!

*Martin had to stay in the hospital for a non-life-threatening illness. While he enjoyed the care (not so much the hospital food!), he was a bit surprised that his medical insurance didn't cover all his bills. Luckily, Martin also had **Hospital Care Coverage** to help!*

The cost of a hospital stay can be overwhelming and set you back financially. Hospital Care Coverage helps ease the financial impact by providing a lump-sum payment directly to you for a hospitalization and related costs.

Plan Benefits Include...

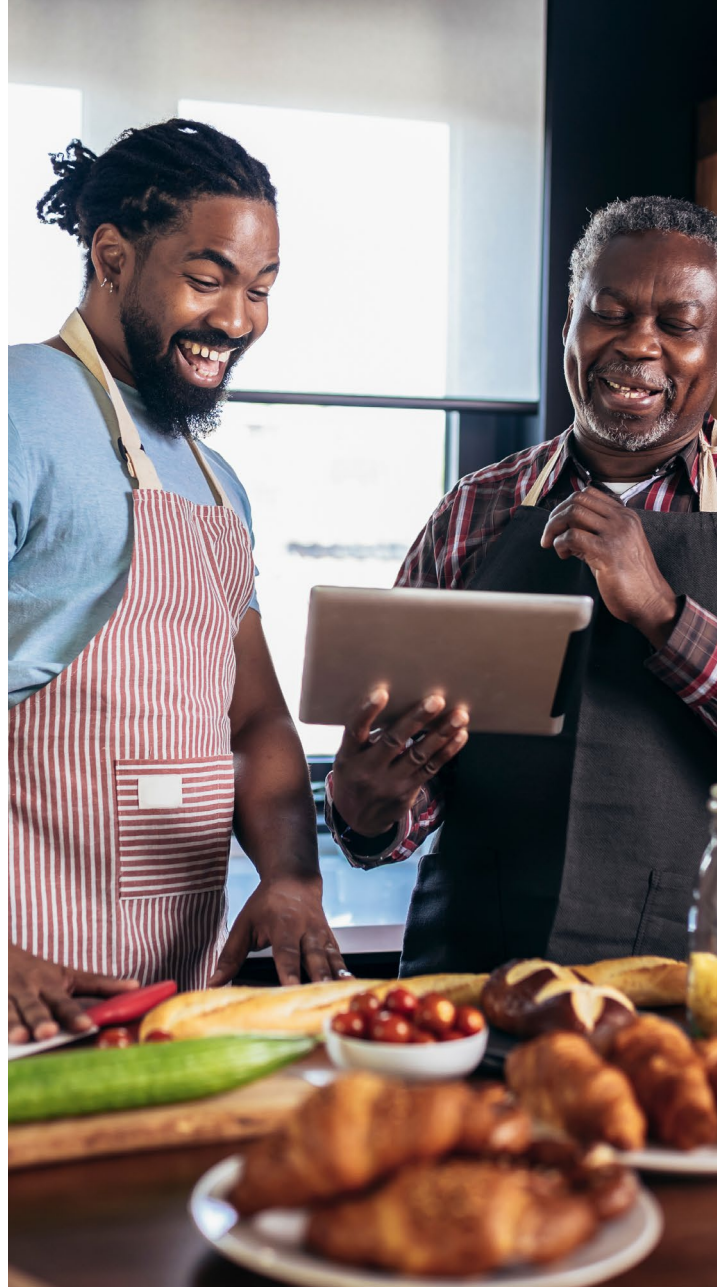
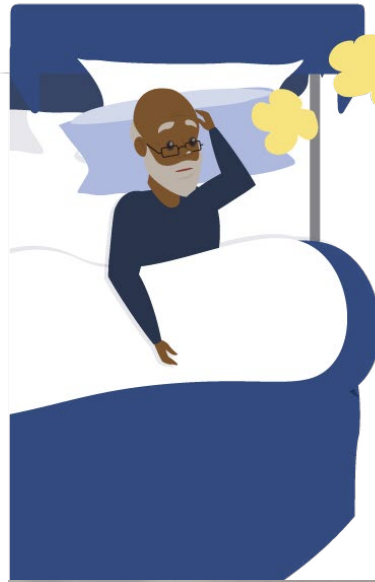
Hospital Admission Benefit
Hospital Confinement Benefit
Hospital Intensive Care Benefit
Hospital Observation Stay Benefit
Hospital Chronic Condition Admission

Cigna Healthcare
Hospital Care
insurance

Click the video thumbnail to watch the video for more information about Cigna's Hospital Care coverage.

\$50 Wellness Benefit!

Hospital Care coverage comes with a \$50 benefit per covered person when you participate in your Wellness Treatment, Health Screening Test, and/or Preventive Care Benefit! Don't miss this added incentive!



Hospital Care Plan Offerings		
Plan Offerings	Plan 1	Plan 2
Hospitalization Benefits		
Hospital Admission (Non-ICU and ICU) <i>No Elimination Period. Limited to 1 day.</i>	\$500	\$1,000
Hospital Chronic Condition Admission <i>No Elimination Period. Limited to 1 day.</i>	\$50	\$100
Hospital Stay <i>No Elimination Period. Limited to 180 days.</i>	\$150	\$250
Hospital Intensive Care Unit (ICU) Stay Day 1 (Additional ICU Admission + Per Day) Day 2 - 180 (Per Day) <i>No Elimination Period. Limited to 180 days.</i>	\$800 one time \$300 per day	\$1,500 one time \$500 per day
Hospital Observation Stay <i>24 hours Elimination Period. Limited to 72 hours. 1 benefit(s) for each 24-hour period or pro rata period of observation</i>	\$100 per 24-hour period	\$200 per 24-hour period
Wellness Treatment, Health Screening Test & Preventive Care Benefit		
Also includes COVID-19 Immunization, Tests, and Screenings. Virtual Care accepted.	\$50, limited to 1 per year.	\$50, limited to 1 per year.

Hospital Care Semi-Monthly Costs		
Tier	Plan 1	Plan 2
Employee	\$4.40	\$8.04
Employee & Spouse	\$10.98	\$19.52
Employee & Child(ren)	\$7.02	\$12.79
Employee & Family	\$13.60	\$23.73

For a full summary of benefits, click [HERE](#).

